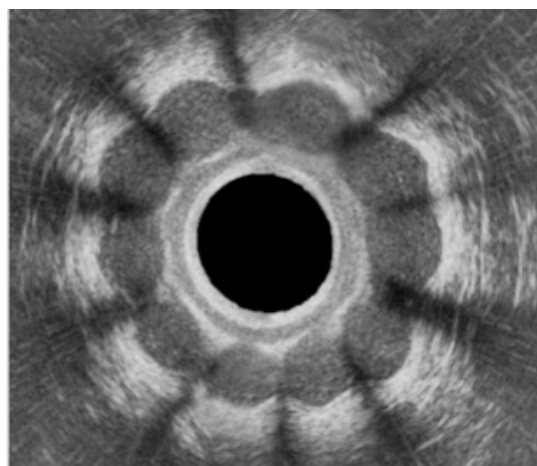




## THD SPHINKEEPER



### Use

THD SphinKeeper is an implantable prostheses system where the prosthesis are placed in the intersphincteric space of the anal canal in patients suffering of faecal incontinence episodes.

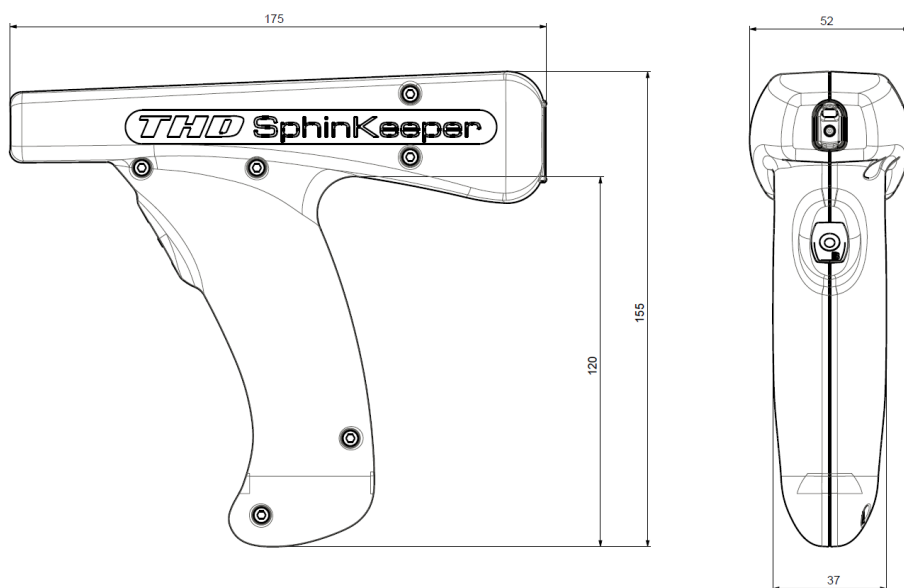
The special shape of the implanted prostheses creates a ring-form between the internal and external sphincter, a sort of artificial anal sphincter able to oppose symptoms of the pathology.

### General Description

The THD SphinKeeper system includes an applicator powered by batteries (Delivery System) and a dispenser kit (Self Expandable Implant). Both devices are sterile and disposable. The implantable prosthesis are made with HYEXPAN, a unique synthetic material able to expand through the absorption of body fluids. The prostheses are inserted in the intersphincteric space of the anal canal by the Delivery System: here the prostheses absorb the body fluids and hence expand taking a toroidal shape which surrounds the internal sphincter. The SphinKeeper prostheses are inert and biocompatible, have long-term stability and can be easily localized with an endoanal ultrasound: once the body fluids are absorbed, the prostheses become softer and their consistence can be compared to the surrounding sphincter muscle tissue. Once the prostheses become thicker, they remain within the intersphincteric space of the anal canal and the risk of spontaneous dislocation is very low. In the end, thanks to their characteristic shape-memory, they can adapt to the complex physiological aspect of the defecation process by either allowing or blocking the passage of the stool when necessary. The SphinKeeper Delivery System, made of a medical material, allows for a guided, easy and precise positioning of the prosthesis.

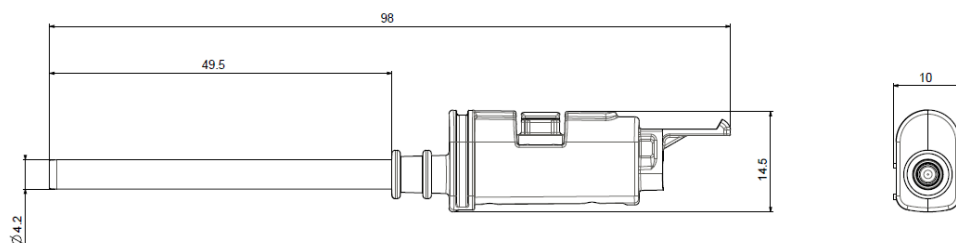


### Delivery System Dimensional Features



Length	175 mm
Height	155 mm
Width	52 mm
Handle Height	120 mm
Handle Width	37 mm
Weight	300 g

### Self Expandable Implant Dimensional Features



Length	98 mm
Height	14 mm
Width	9 mm
Tube Diameter	4.2 mm
Tube Length	49 mm
Weight	10 g

### THD SPHINKEEPER (cod. 820011) contents of the package

Q.ty	Code	Description
1	820009	THD SphinKeeper Delivery System
10	820010	THD SphinKeeper Self-Expandable Implant