



THD LASER STATION

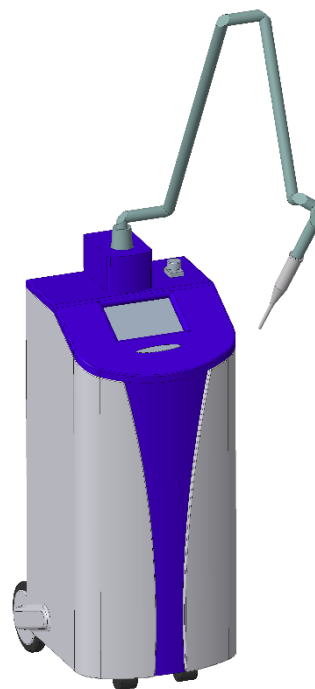
The **THD Laser Station** system is a CO₂ laser ablation system that emits a coherent light beam at a wavelength of 10.6 micrometers which is strongly absorbed by water and therefore by human tissues which contain a high percentage of it

This feature makes **THD Laser Station** the ideal tool for numerous applications in the proctological field.

THD Laser Station coupled to the THD HRA Laser disposable handpiece allows the beam to be focused inside the disposable surgical anoscope with which to intervene in the field of diagnosis and treatment of numerous pathologies of the anal canal and specifically on pre-cancerous lesions induced by HPV.

TECHNICAL FEATURES

- CO₂ type
- Wavelength 10.600 nm
- Operating modes: Continuous wave, pulsed and superpulsed.
- Adjustable power from 0.5W to 30W(CW)
- 7-axis articulated arm
- TFT Touch-Screen interface
- Activation pedal
- Power supply 230 Vac/50 Hz
- 5" fixed focal operating handpiece (disposable tip)



FUNCTIONALITY

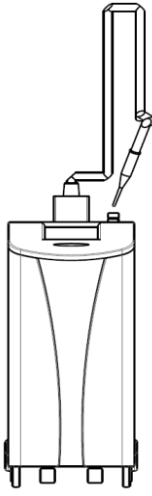
- Maximum ease of use with Touch-screen interface
- Intuitive graphics with the most important parameters always visible
- Possibility of memorizing personalized treatment data
- Designed for the future with the possibility of continuous updates

SECURITY

- Sophisticated control system to guarantee high precision in the energy value delivered to the patient
- Automatic Spot diameter recognition system used to ensure correct parameter setting



- Automatic safety alarm system with self - diagnosis

Dimentional Characteristics		
THD LASER STATION		
Height	1230 mm	
Front width	370 mm	
Depth	430 mm	
Wheel rotation diameter	870 mm	
Weight (unpacked) Weight (packed)	40 Kg 55 kg	

Functional Characteristics	
Laser Type	CO ₂ Laser
Wavelength	10.600 nm
Operating Mode	Continuous Wave (CW), Pulsar, SuperPulse
CW power	0.5 – 30 W to the fabric
Average power in SuperPulse	0.5 – 12 W to the fabric
Average power in Pulsar	5 – 25 W to the fabric
Mode on display	Continuous, single pulse, pulse repetition
Guiding light	Laser Diode (red), 635 nm
Articulated arm	Lightweight aluminum fiber, 7 mirrors, spring balanced
User interface	8" color TFT with Touch-Screen technology
Memory capacity	> 1000 setting files
Power supply	230 Vac, 660 VA (max), 50 Hz
Handful	Fixed focal length handpiece 5", with spherical seat tip

Accessories for THD Laser Station				
REF	Denomination	Q.ty	Description	Packaging
800298	THD LIGHT-SCOPE HRA KIT LASER	10	HRA Laser anoscope, disposable handpiece, liquid dispenser and suction tube.	Single use Not sterile

THD LASER STATION		
Q.tà	Cod.	Description
1	800296	THD LASER STATION