



THD Doppler

Minimally invasive surgical treatment for hemorrhoids

Document intended for Health Care Professionals only.
Distribution of this document is restricted to the U.S.A.
© 2018 THD S.p.A. All Rights Reserved



THD Doppler

Minimally invasive surgical treatment for hemorrhoids

WHY THD?

Hemorrhoidal arterial ligation and mucopexy are able to:

- reduce the arterial hyperflow
- lift prolapsed tissue
- restore anatomical and physiological structure of the anal canal
- preserve sphincter integrity and continence

By reducing the arterial hyperflow to the hemorrhoidal plexus and repositioning prolapsed mucosa, the anatomical condition is restored.

This procedure offers durable results in Grade II, III and IV hemorrhoids with clear advantages, such as:

- mild post-operative pain
- short recovery
- quick return to normal activities
- sphincter preservation
- can be performed multiple times, as needed



Historically, hemorrhoidectomy (open/closed) was considered the surgical gold standard. However, the side-effects include:

- severe post-operative pain
- long recovery
- delayed return to normal activities
- rare but severe complications
- risk of impaired sphincter continence



THDDoppler

Specifically designed for the THD Doppler Procedure: THD Revolution doppler generator and LED light source with a dedicated anoscope, the THD Slide

THDRevolution

THDSlide



BENEFITS

NON-EXCISIONAL

The anorectal physiology remains intact: the procedure preserves the vital function of hemorrhoids.

FAST

Procedure typically performed in 30 minutes or less.

MINIMALLY INVASIVE

Technique resulting in less post operative pain and shorter time to first bowel movement.

THD Doppler METHOD

1

Dilation and device insertion

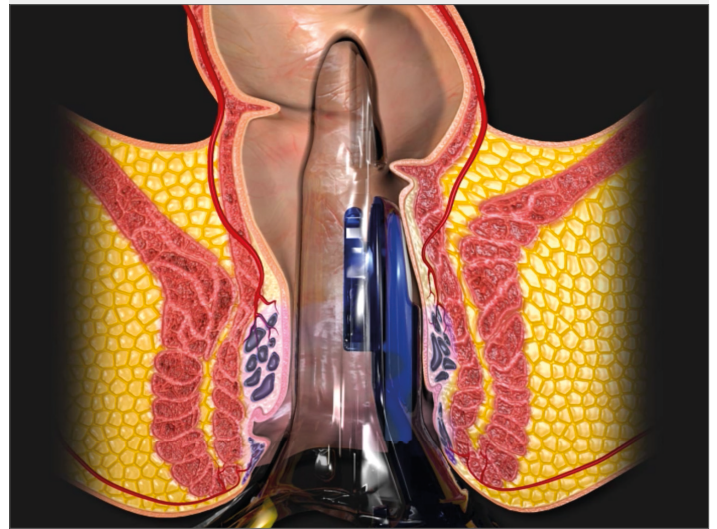
Gently dilate the anus by using a clamp.



2

Full device insertion

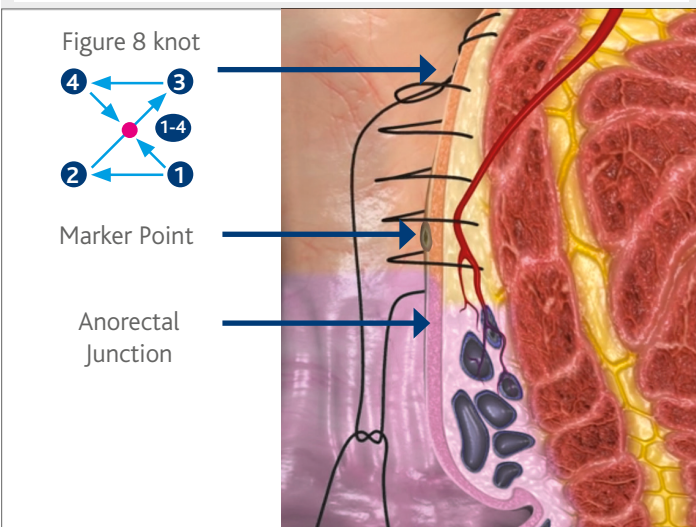
Fully insert the anoscope to starting location of right lateral position (3 o'clock).



5

Running suture

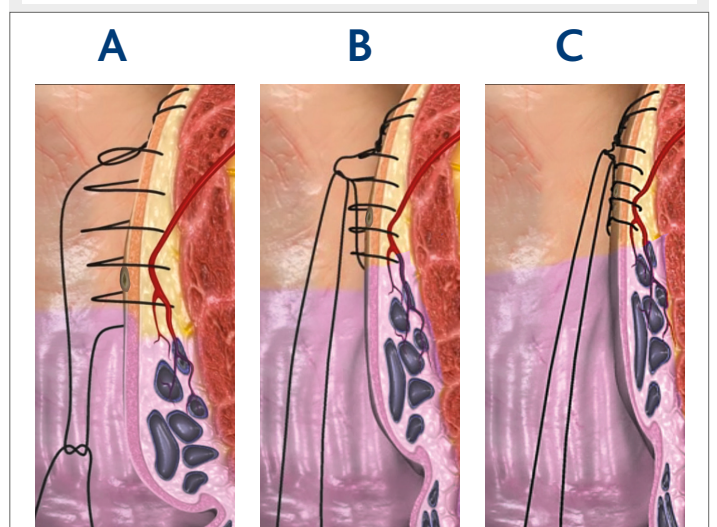
Pull back the sliding part of the anoscope to perform a running stitch (5mm between each throw) until the marker point inclusion, staying 1-2 cm proximal to the anorectal junction.



6

Prolapse lifting

Upon closing the knot, the prolapsed tissue will be lifted inside restoring the anatomical condition.

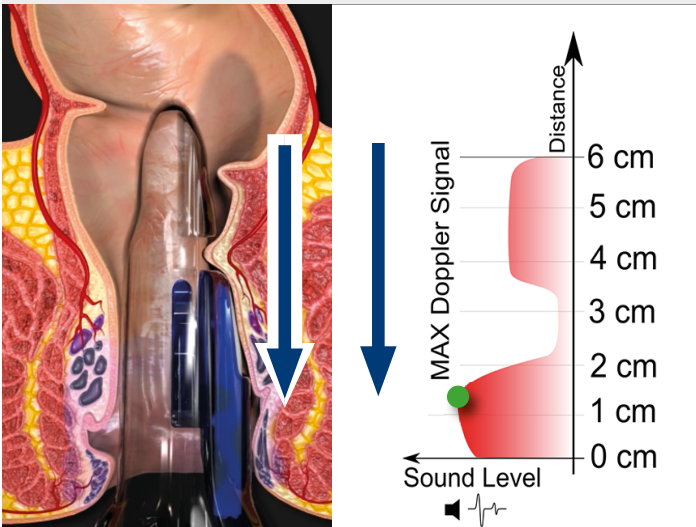


THE BASIC STEPS

3

Optimal signal and marker-point finding

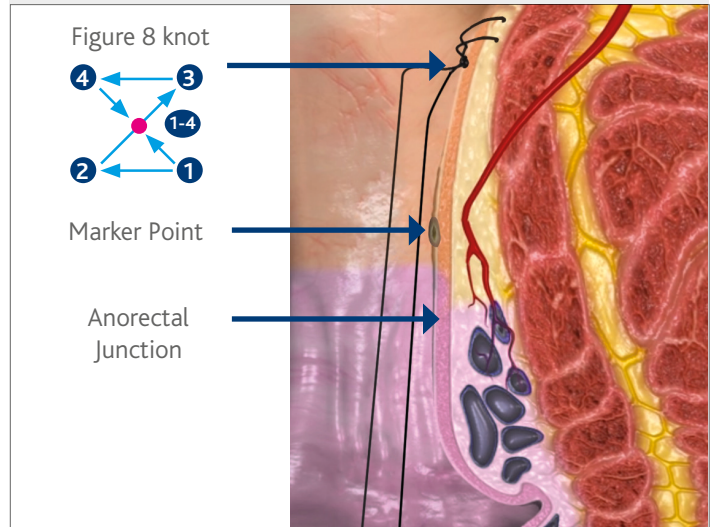
Retract and move the anoscope distally to locate the maximum doppler signal, usually found just above the anorectal junction. With electrocautery or surgical marking pen, create marker point.



4

Anchor point

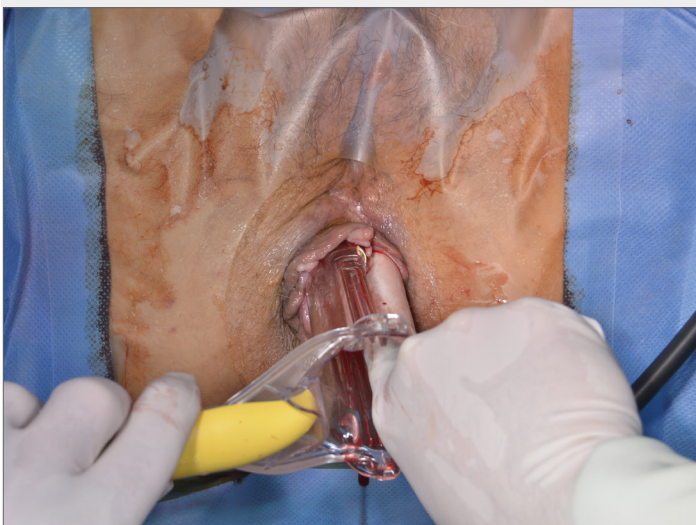
Complete reinsertion of the device and placement of the fixation stitch as an anchoring point.



7

Device extraction

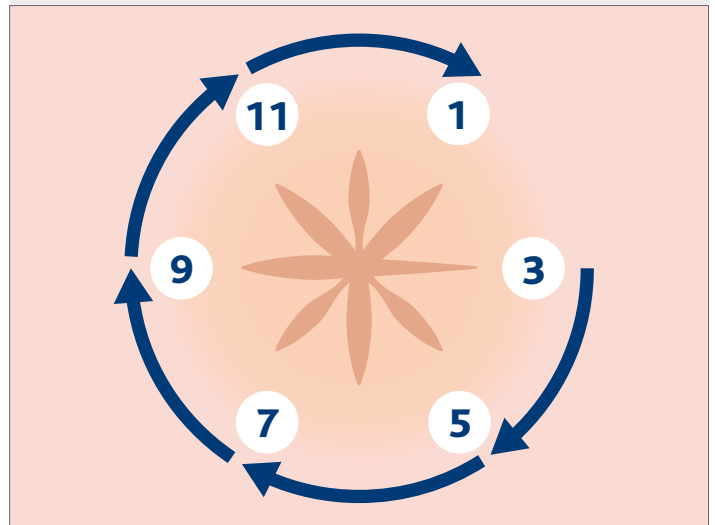
Gently extract the device protecting the mucopexy.



8

Repetition of the procedure

Repeat the procedure moving clockwise.



THD Revolution

All-in-one Doppler and LED light generator

Doppler signal intensity display



Doppler foot pedal

Volume and brightness control

LED light

FEATURES

All-in-one Doppler signal processor and LED light generator.

Highly sensitive, continuous wave for easy detection and location of key vessels.

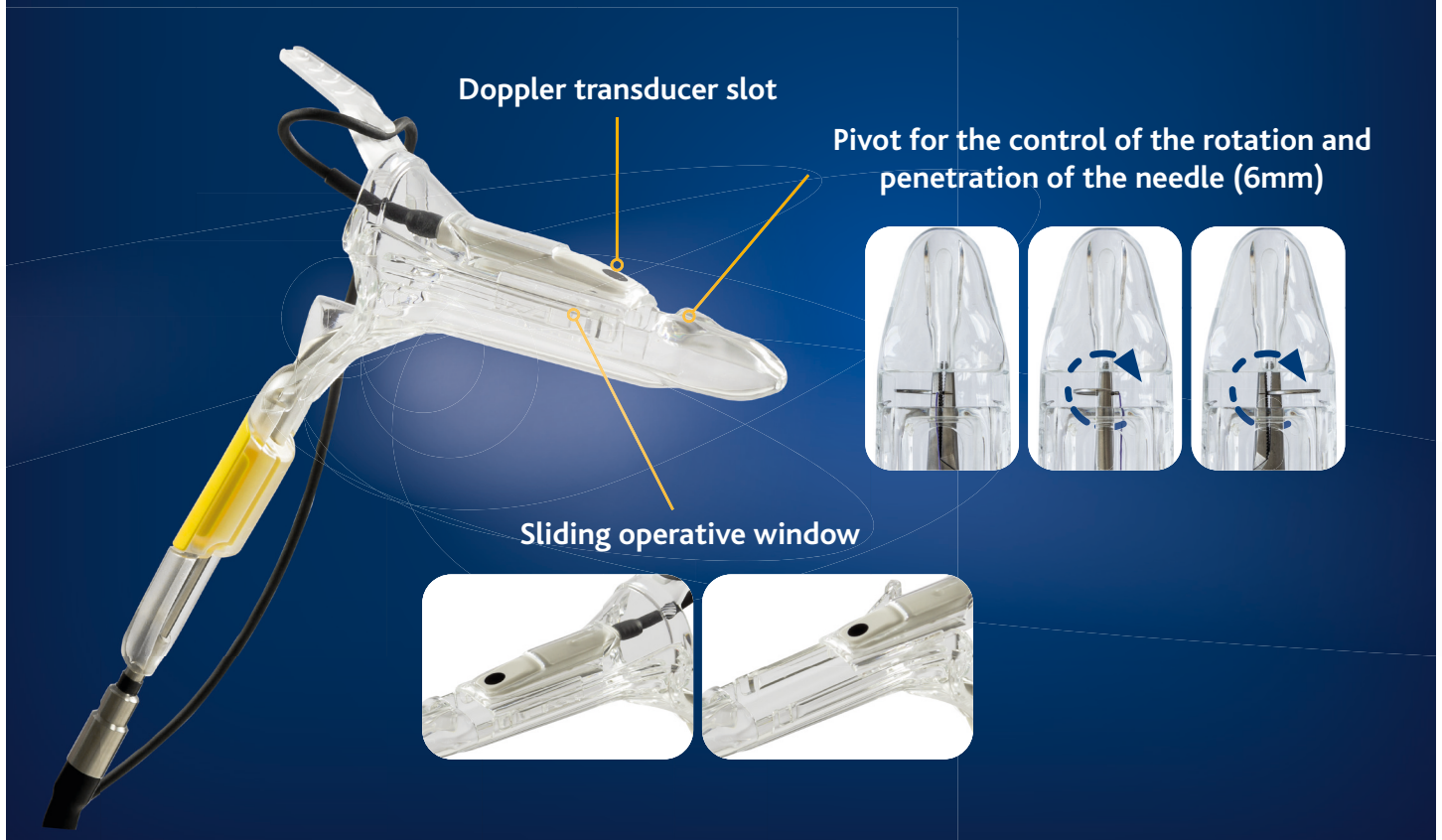
Bright illumination of the operative field.

Adjustable knobs controlling volume and brightness.

An On / Off foot pedal allows for muting the Doppler sound during the procedure once the vessel has been located.

THD Slide

Customized surgical anoscope



FEATURES

Operative anoscope specifically designed to perform the procedure.

Ergonomic handle accommodates the fiber optic LED light to illuminate the operating area.

A patented pilot hole in the front of the anoscope allows for total control of the rotation and penetration (6mm) of the needle.

The operative window can be incrementally extended by sliding the top of the anoscope, letting the operator perform a continuous suture pexy, unimpaired.

Medical grade plastic allows for clear vision of the operative field.

SPECIFICATIONS

THD Revolution

Part No. 800139

- Includes
- 1 Generator box
 - 1 Muting pedal
 - 1 Medical grade power cord
 - 1 Reusable fiber optic cord with curved tip
 - 1 Single use Doppler
 - 1 Reusable gold handled needle driver



THD Slide One Kit - Sterile

Part No. 800070

- Includes
- 1 THD® Slide One anoscope (Sterile)
 - 1 Single use/disposable Doppler (Sterile)
 - 1 Disposable needle driver (Sterile)
 - 1 Box sutures (6 pieces, sterile)
 - 1 Knot pusher (Sterile)



Accessories & Spare Parts

Part No. 880014	Rolling Cart	THD® Revolution Rolling Cart
Part No. 880000	TrueGlyde Sutures	Box of 6 TrueGlyde Suture
Part No. 880003	Gold Handled Needle Driver	Reusable, laser etched needle driver
Part No. 880012	Fiber Optic Cord	Fiber optic Cord with curved light tip
Part No. 880006	Muting Pedal	THD® Revolution Muting Pedal