



AIN LESIONS TREATMENT

Anal intraepithelial neoplasia lesions treatment options

Document intended for Health Care Professionals only.
Distribution of this document is restricted to the U.S.A.



High Frequency Desiccator



The High Frequency Desiccator is a low-power electrosurgical unit designed for the office setting. This low-maintenance unit is perfect for treatment of anal dysplasia and other High Resolution Anoscopy procedures. The power can be adjusted up to 40 watts and has 1/10th watt increments in the first 10 watts to allow for usage in a wide range of specialties. Autoclavable Hand Piece with power-switching buttons (THDZ902) and Stainless Steel Stand for mounting on cart are included.

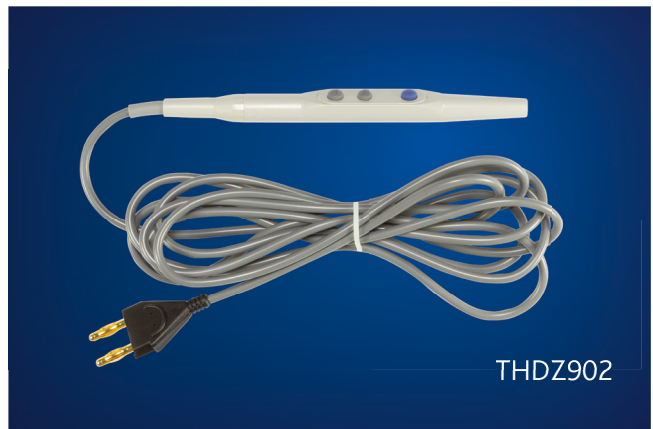
TECHNICAL SPECIFICATIONS

Height: 18.8 cm	Depth: 10.5 cm	Line Voltage: 100-240 VAC	Output Frequency: 328-429 kHz
Width: 22.8 cm	Weight: < 2.26 kg	Line Frequency: 50-60 Hz	

Reusable Handpiece for Hyfrecator

The Reusable Hand Piece (THDZ902) a 3-button hand piece intended to be used with the High Frequency Desiccator (THDA942).

Use the blue button for activating the monopolar output. Use the up-down buttons to remotely adjust the power settings of the High Frequency Desiccator (THDA942). Item is steam autoclavable up to 25 times. Sold with the unit and also separately.



Smoke-Evac Tubing kit for Hyfrecator

For simultaneous evacuation of smoke while using the High Frequency Desiccator, attach the Smoke-Evac Fusion High Frequency Desiccator Tubing Kit (THD14-4010HB) to the tip of the Autoclavable 3-Button Hand Piece (THDZ902) and with Smoke-Evac Fusion Probes.

Attach 9mm connector to Smoke-Evacuator (THDZSE01) using the corresponding port. Item is disposable.



Hyfrecator - Reusable Grounding Cable

The High Frequency Desiccator (THDA942) can be used with or without a grounding cable and pad.

To avoid unforeseen shocks to provider or patient, the Reusable Grounding Cable (THD13-5300) can be plugged into the Patient Plate port of the High Frequency Desiccator and used in conjunction to the Disposable Grounding Pads (THD14-5200). This item is tested for 100 uses. Item sold separately.



THD13-5300

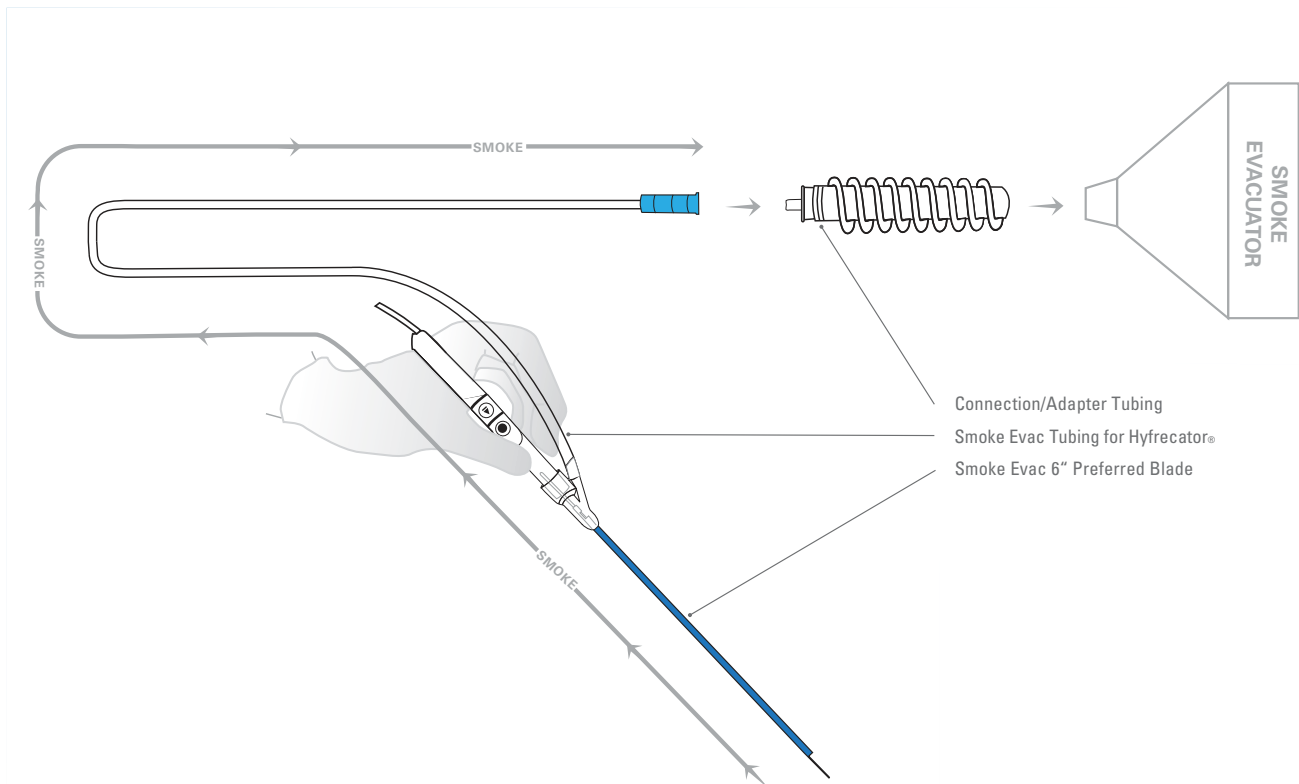
Hyfrecator - Disposable Grounding Pads

Disposable Grounding Pad (THD14-5200) is intended to be used with the Reusable Grounding Cable (THD13-5300) to ground the patient without physical contact from the provider.

This pad works to disperse the energy from the High Frequency Desiccator and return it safely to the machine without any painful shocks to provider or patient. Item sold separately.



THD14-5200



Electrosurgical Unit



The A1250 Electrosurgical Unit (THDZ1250) is the electrosurgery solution for operating rooms and surgery centers who need a multipurpose unit for monopolar and bipolar surgical procedures. This electrosurgical unit features 5 common energy outputs with up to 120 watts of power: Cut, Blend, Coagulation, Fulguration, and Standard Bipolar.

TECHNICAL SPECIFICATIONS

Height: 15.2cm	Depth: 30.5cm	Line Voltage: 100-240 VAC	Output Frequency: 350-600 kHz
Width: 26cm	Weight: < 4Kg	Line Frequency: 50-60 Hz	

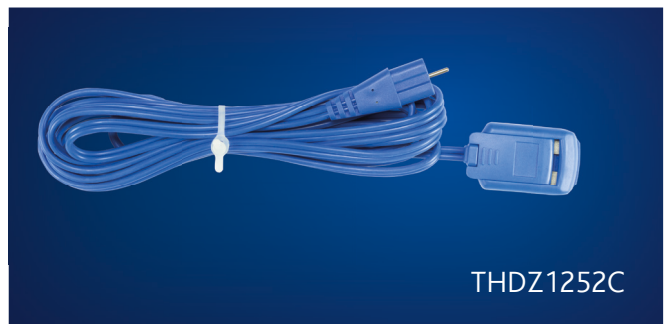
Smoke-Evac Fusion Handpiece

The Smoke-Evac Fusion Hand Piece (THD14-2000) is low-profile electrosurgical pencil with an integrated smoke channel. This push-button hand piece has two standard buttons: Cut/Blend (Yellow) and Coagulation/Fulguration (Blue). Item is intended to be used in conjunction with Smoke-Evac Fusion Probes to provide a smoke-free surgical environment. Item is disposable and sold separately.



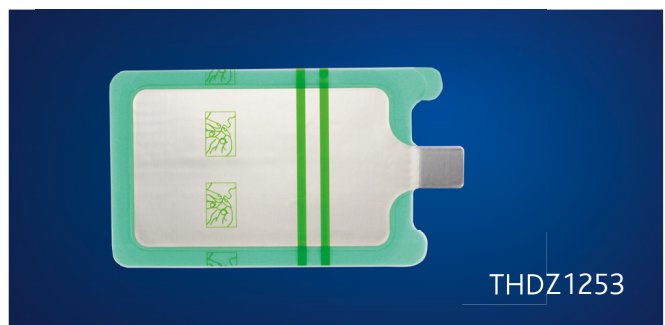
ESU - Reusable Grounding Cable

The Reusable Grounding Cable – ESU (THDZ1252C) is used in conjunction with the Disposable Grounding Pads – ESU (THDZ1253) to ensure a safe, grounded electrosurgical procedure. Bovie's neutral electrode monitoring (NEM) increases patient safety by automatically detecting when Cable or Pad are not connected properly. Item has been tested for 100 uses. Item is included and replacements are available separately.



ESU - Split Grounding Pads

The Disposable Grounding Pads – ESU (THDZ1253) are used with the Reusable Grounding Cable – ESU (THDZ1252C) to provide a safe and grounded electrosurgical procedure. This split grounding pad features adhesive gel to ensure proper patient connectivity and minimize electrical shocks and burns when properly applied. Item is sold separately.

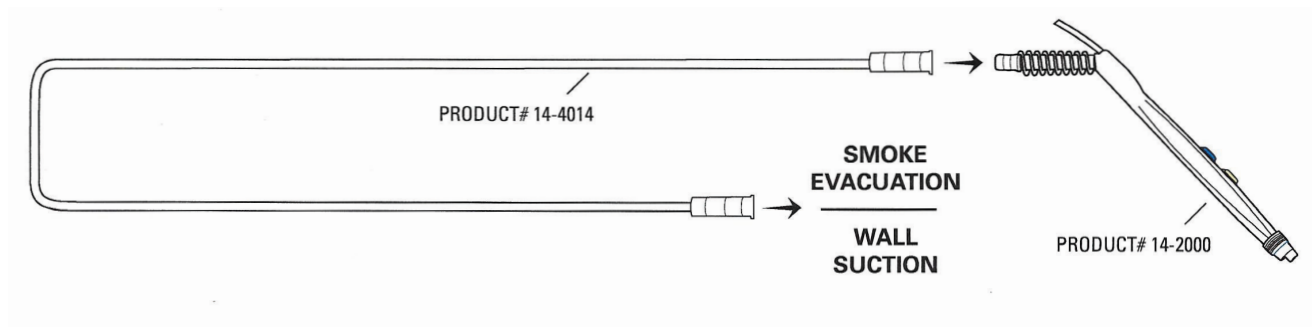


Smoke-Evac Fusion Suction Tubing Kit

The Smoke-Evac Fusion Suction Tubing Kit (THD14-4014) is an 8 foot long tubing set with suction connectors at both ends. Connectors are designed to fit male ports 8-10mm. Tubing kit is intended for evacuation of electrosurgical aerosols and gases. Not intended for use with fluids. Use tubing kit in conjunction with Smoke-Evac Fusion Hand Piece (THD14-2000) and Smoke-Evac Fusion Probes for a smoke-free surgical field. Item is disposable and sold separately.



THD14-4014



Smoke-Evac Fluid Catch Tubing Kit

The Smoke-Evac Fusion Tissue Catch Tubing Kit (THD14-4015) is an 8 foot long tubing set with suction connectors at both ends. Connectors are designed to fit male parts 8-10mm. Tubing kit is intended for evacuation of electrosurgical aerosols, gases, and fluids. Use in conjunction with Smoke-Evac Fusion Hand Piece (THD14-2000) and Smoke-Evac Fusion Probes for smoke-free surgical field and integrated fluid suction system without ruining Smoke-Evacuator Filter. Item sold separately.



THD14-4015

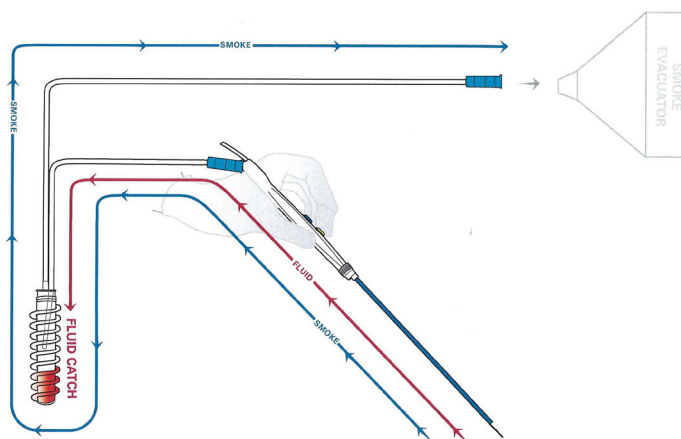


Table Top Smoke Evacuator - Smoke Shark II



The Bovie Smoke Shark II is a light-weight, ultra-quiet, and compact smoke evacuator that features 3 ports for maximum versatility of connections. It is intended to reduce the risk of electrosurgery by removing potentially harmful surgical smoke from the air. An indicator level on the front panel allows for quickly checking your filter life. The Smoke Shark II also features a simple, push-button fan adjustment with LED indicator to easily identify the current setting. Included foot switch makes hands-free activation simple. For best results, use with Smoke-Evac Fusion Hand Piece (THD14-2000).

TECHNICAL SPECIFICATIONS

Height: 15.2 cm
Width: 27.9 cm

Depth: 39.4 cm
Weight: 4.3 kg

Line Voltage: 240 VAC
Line Frequency: 50-60 Hz

Noise Level: > 55 dBA

35 Hour Filter - Table Top Smoke Evacuator

The 35 Hr Replacement Filter (THDZF35) is a 4-stage filter designed to filter aerosols, gross particulate, and micro-organisms from 0.1 – 0.2 microns at an efficiency of 99.999%.

A carbon filter ensures the removal and absorption of toxic gases and odors. The 3-port design accommodates a variety of tubing sizes. Item is sold separately.

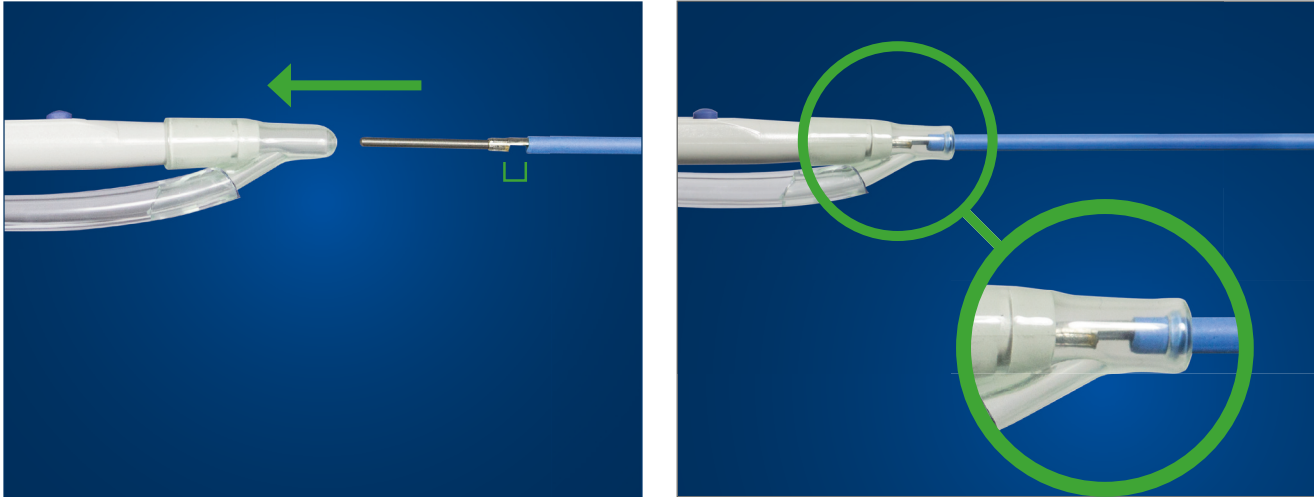


vavvThe EZLINK Remote Activator allows for automatic activation of the Smoke Shark II when connected with Electrosurgical Unit (THDZ1250) or High Frequency Desiccator (THDA942). Adjustable delay can be set from 0 to 10 seconds after deactivation of electrosurgical device to ensure capture of residual smoke plume. Item is sold separately.



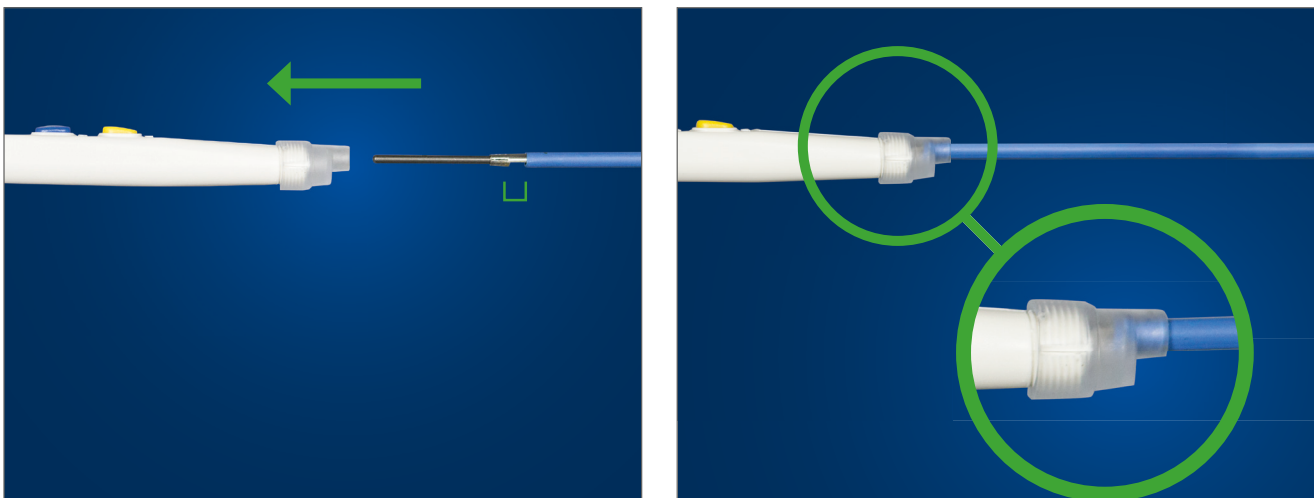
Connecting the probe and the handpiece

WITH HIGH FREQUENCY DESICCATOR



Place Smoke-Evac Fusion High Frequency Desiccator Tubing Kit (THD14-4010HB) onto hand piece with Y-connector on the distal end of the hand piece. Insert probe into hand piece through the hole in the Y-connector until tip of Y-connector is depressed. The flute notch on the probe should be pointed towards the Tubing Kit.

WITH ELECTROSURGICAL GENERATOR



Insert probe into Smoke-Evac Fusion Hand Piece (THD14-2000) until blue is visible in the collar of the nose of the hand piece. The flute notch on the probe should be pointed away from the buttons of the hand piece.

Smoke-Evac Fusion - 6" - 3mm Flex Ball Tip



The Smoke-Evac Fusion Flexible 6" 3mm Ball is a stainless steel electrothermal probe that features a hollow center to allow for smoke evacuation from directly behind the tip.

The Smoke-Evac Fusion Flexible 6" 3mm Ball probe is used to seal blood vessels during a procedure through electrothermal coagulation.

This probe is also used to treat anal dysplasia in High Resolution Anoscopy (HRA) cases.

This flexible probe allows providers to achieve infinite angles of treatment. Harmful surgical smoke will be suctioned through the tip of the electrode.

As char accumulates from desiccated tissue, clean off with moistened gauze.

USE WITH SMOKE EVACUATOR



Without smoke evacuator



With smoke evacuator

This probe must be used with the Smoke-Evac Fusion Hand Piece (THD14-2000) or a specialty tubing kit. For best results, use with THD Light-Scope Procto HRA (800191) and bend probe ~2cm from the hand piece to desired angle. Always activate smoke-evacuator during treatment to ensure optimal visibility and safety.

Smoke-Evac Fusion - 6" - Flex Blade



The Smoke-Evac Fusion Flexible 6" Blade is a stainless steel electro-surgical probe that features a hollow center to allow for smoke evacuation from directly behind the tip.

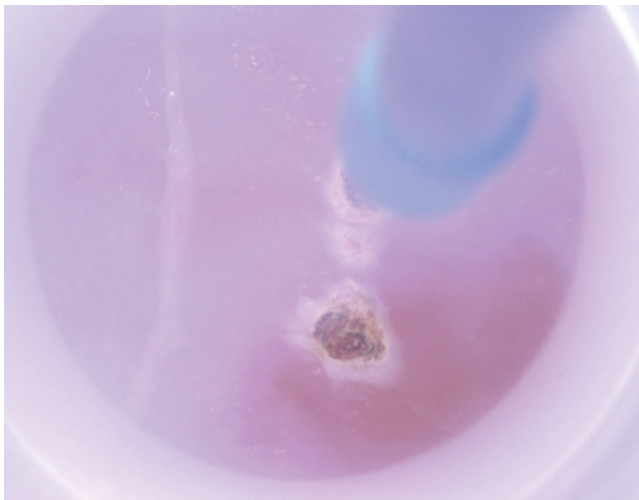
The Smoke-Evac Fusion Flexible 6" Blade is a Teflon-coated, stainless steel blade that is used to ablate lesions in High Resolution Anoscopy (HRA) cases using electrothermal fulguration.

This flexible probe allows for providers to achieve infinite angles of treatment.

Harmful surgical smoke will be suctioned through the tip of the electrode.

As char accumulates from desiccated tissue, clean off with moistened gauze.

USE WITH SMOKE EVACUATOR



Without smoke evacuator



With smoke evacuator

This probe must be used with the Smoke-Evac Fusion Hand Piece (THD14-2000) or a specialty tubing kit. For best results, use with THD Light-Scope Procto HRA (800191) and bend probe ~2cm from the hand piece to desired angle. Always activate smoke-evacuator during treatment to ensure optimal visibility and safety.

Smoke-Evac Fusion - 2" - Plastic Blade



The Smoke-Evac Fusion 2" Plastic Blade is a stainless steel electro-surgical probe that features a hollow center to allow for smoke evacuation from directly behind the tip.

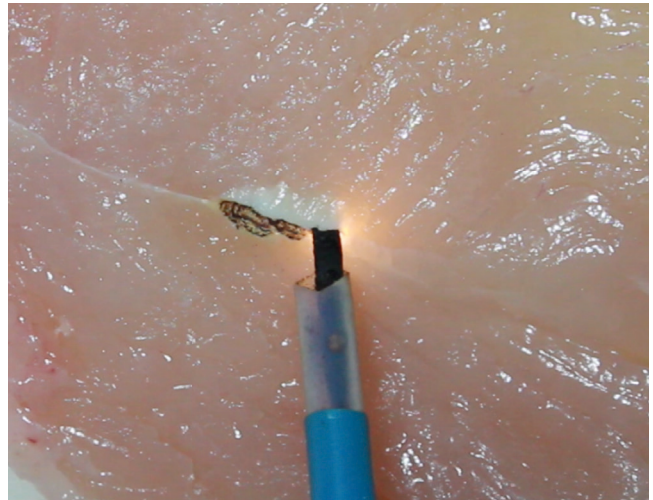
The Smoke-Evac Fusion 2" Plastic Blade is a Teflon-coated, stainless steel blade that is used to ablate perianal lesions in High Resolution Anoscopy (HRA) cases using electrothermal fulguration.

As char accumulates from desiccated tissue, clean off with moistened gauze.

USE WITH SMOKE EVACUATOR



Without smoke evacuator



With smoke evacuator

This probe must be used with the Smoke-Evac Fusion Hand Piece (THD14-2000) or a specialty tubing kit.

AIN LESIONS TREATMENT

Anal intraepithelial neoplasia lesions treatment options

Table Top Smoke Evacuator - Smoke Shark II
(THDZSE01)



Electrosurgical Unit
(THDZ1250)



High Frequency Desiccator
(THDA942)

TIPS



BENEFITS

SAFE

Smoke-Evac Fusion is a simple solution for removing surgical smoke before it escapes. Combine industry-standard electrosurgical performance with superior suction technology to protect your team. Suction toxic smoke plumes from the source with the Smoke-Evac Fusion System and your lungs will thank you.

FAST

Clear your field of vision while you work and you will finish procedures faster and more efficiently. The Smoke-Evac Fusion suctions through the probe to clear the smoke without blocking your view. No more waiting for the smoke to clear!

COST EFFECTIVE

The Smoke-Evac Fusion Proctostation system is a low-cost treatment system for a wide range of procedures that can be used in your office. One system that fits all your electrosurgical and suctioning needs in an affordable package.

SPECIFICATIONS

High Frequency Desiccator



Part no. THDA942

Accessories & Spare Parts		PCS / BOX
THDZ902	Reusable Handpiece for Hyfrecator	1
THD14-4010HB	Smoke-Evac Tubing kit for Hyfrecator	10
THD13-5300	Hyfrecator - Reusable Grounding Cable	1
THD14-5200	Hyfrecator - Disposable Grounding Pads	25

A1250 ESU (ELEC SURG UNIT)



Part no. THDZ1250

Accessories & Spare Parts		PCS / BOX
THD14-2000	Smoke-Evac Fusion Handpiece	10
THDZ1252C	ESU - Reusable Grounding Cable	1
THDZ1253	ESU - Split Grounding Pads	25
THD14-4014	Smoke-Evac Fusion Suction Tubing Kit	10
THD14-4015	Smoke-Evac Fluid Catch Tubing Kit	10

Table Top Smoke Evacuator - Smoke Shark II



Part no. THDZSE01

Accessories & Spare Parts		PCS / BOX
THDZF35	35 Hour Filter - Table Top Smoke Evacuator	1
THDEZLINK01	Smoke-Evac Remote Activator	1

Also available

THD FUSION FLEX 6" TIPS

- 1) THD14-1036
- 2) THD14-1066P



THD FUSION 2" TIPS

- 3) THD14-1002PA



THD360755C - 2022/10/06 - © THD S.p.A.

THD America, Inc.

1731 SE Oralabor Road, Ankeny, IA, 50021, USA
 Ph. +1 866-374-9442 Fax +1 813-626-0303
www.thdlab.us

